



Certificate of Analysis

CDPHE QA SAMPLE

1 of 4

ICAL ID: 20231018-005
Sample: CA231018-004-005
Hurricane
Strain: Hurricane
Category: Ingestible
Type: Beverage

Sip Elixirs
Lic. #
N/A
San Diego, CA 92121
Lic. #

Batch#: Hur-101623
Batch Size Collected:
Total Batch Size:
Collected: 10/27/2023; Received: 10/27/2023
Completed: 10/27/2023

Moisture NT Water Activity NT	Δ9-THC 85.56 mg/unit 6.58 mg/serving	CBD 0.55 mg/unit 0.04 mg/serving	Total Cannabinoids 90.48 mg/unit 6.96 mg/serving	Total Terpenes NT
--	---	---	---	----------------------

Summary	SOP Used	Date Tested	
Batch			Pass
Cannabinoids	POT-PREP-002	10/19/2023	Complete
Residual Solvents	RS-PREP-001	10/24/2023	Complete
Microbials	MICRO-PREP-001	10/25/2023	Pass
Mycotoxins	PESTMICO-LC-PREP-001	10/23/2023	Pass
Heavy Metals	HM-PREP-001	10/24/2023	Pass
Foreign Matter	FM-PREP-001	10/23/2023	Pass
Pesticides	CO-PESTMICO-LC-PREP-001 / CO-PEST-GC-PREP-001	10/23/2023	Pass



Scan to see results

Cannabinoid Profile

1 Unit = container; 63.41 g. 1 mL = 1.04 g. 13 serving(s) per container; 5mL per serving.

Analyte	LOQ (mg/g)	LOD (mg/g)	%	mg/g	mg/mL	mg/unit	Analyte	LOQ (mg/g)	LOD (mg/g)	%	mg/g	mg/mL	mg/unit
THCa	0.0128	0.0043	ND	ND	ND	ND	CBGa	0.0046	0.0015	ND	ND	ND	ND
Δ9-THC	0.0046	0.0010	0.135	1.35	1.40	85.56	CBG	0.0046	0.0005	<LOQ	<1	<1	<LOQ
Δ8-THC	0.0046	0.0014	0.005	0.05	0.05	3.30	CBN	0.0046	0.0005	0.001	0.01	0.01	0.63
THCV	0.0046	0.0006	0.001	0.01	0.01	0.44	Total THC			0.14	1.40	1.46	88.85
CBDa	0.0049	0.0016	ND	ND	ND	ND	Total CBD			0.00	0.01	0.01	0.55
CBD	0.0046	0.0008	0.001	0.01	0.01	0.55	Total			0.14	1.43	1.48	90.48
CBDV	0.0046	0.0004	ND	ND	ND	ND							
CBC	0.0076	0.0025	ND	ND	ND	ND							

Total THC = THCa * 0.877 + Δ9-THC; Total CBD = CBDa * 0.877 + CBD. NR = Not Reported, ND = Not Detected. Potency is reported on a dry weight basis. Instrumentation and analysis SOPs used: Cannabinoids: UHPLC-DAD (POT-INST-005), Moisture: Moisture Analyzer (MOISTURE-001). The measurement of uncertainty for total THC concentration is ± 0.009%.

Terpene Profile

Analyte	LOQ (mg/g)	LOD (mg/g)	%	mg/g	Analyte	LOQ (mg/g)	LOD (mg/g)	%	mg/g
---------	------------	------------	---	------	---------	------------	------------	---	------

NR = Not Reported (no analysis was performed); ND = Not Detected (the concentration is less than the Limit of Detection (LOD)). Analytical instrumentation used: HS-GC-MS; samples analyzed according to SOP CO-TERP-INST-003.



Infinite Chemical Analysis Labs
8312 Miramar Mall
San Diego, CA
(858) 623-2740
www.infiniteCAL.com
Lic# C8-000047-LIC

Josh M Swider

Josh Swider
Lab Director, Managing Partner
10/27/2023

Confident Cannabis
All Rights Reserved
support@confidentcannabis.com
(866) 506-5866
www.confidentcannabis.com



This product has been tested by Infinite Chemical Analysis Labs, LLC using validated testing methods and a quality control system as required by state law. Sample processing and testing was performed in accordance with CDPHE Colorado Wholesale Food, Industrial Hemp, and Shellfish Regulations (6 CCR 1010-21). Values reported relate only to the product tested. Infinite Chemical Analysis Labs, LLC makes no claims pertaining to the efficacy, safety, or other risks associated with any detected or non-detected levels of any compounds reported herein. This Certificate shall not be reproduced except in full without the written approval of Infinite Chemical Analysis Labs, LLC.



Certificate of Analysis

CDPHE QA SAMPLE

2 of 4

ICAL ID: 20231018-005
Sample: CA231018-004-005
Hurricane
Strain: Hurricane
Category: Ingestible
Type: Beverage

Sip Elixirs
Lic. #
N/A
San Diego, CA 92121
Lic. #

Batch#: Hur-101623
Batch Size Collected:
Total Batch Size:
Collected: 10/27/2023; Received: 10/27/2023
Completed: 10/27/2023

Residual Solvent Analysis

Category 1	LOQ	LOD	Limit	Status	Category 2	LOQ	LOD	Limit	Status	Category 2	LOQ	LOD	Limit	Status			
	µg/g	µg/g	µg/g	µg/g		µg/g	µg/g	µg/g	µg/g		µg/g	µg/g	µg/g	µg/g			
1,2-Dichloro-Ethane	NR	0.264	0.088	1	NT	Acetone	NR	51.246	0.716	5000	NT	n-Hexane	NR	0.281	0.027	290	NT
Benzene	NR	0.052	0.017	1	NT	Acetonitrile	NR	0.42	0.14	410	NT	Isopropanol	NR	2.86	0.614	5000	NT
Chloroform	NR	0.076	0.025	1	NT	Butane	NR	4.849	0.748	5000	NT	Methanol	NR	2.602	0.867	3000	NT
Ethylene Oxide	NR	0.579	0.179	1	NT	Ethanol	NR	7.575	2.525	5000	NT	Pentane	NR	5.075	1.692	5000	NT
Methylene-Chloride	NR	0.729	0.08	1	NT	Ethyl-Acetate	NR	2.288	0.175	5000	NT	Propane	NR	9.709	3.236	5000	NT
Trichloroethene	NR	0.145	0.028	1	NT	Ethyl-Ether	NR	2.869	0.389	5000	NT	Toluene	NR	0.864	0.067	890	NT
						Heptane	NR	2.859	0.496	5000	NT	Xylenes	NR	2.572	0.326	2170	NT

NR = Not Reported (no analysis was performed), ND = Not Detected (the concentration is less than the Limit of Detection (LOD)). Analytical instrumentation used: HS-GC-MS; samples analyzed according to SOP CO-RS-INST-003.

Heavy Metal Screening

	LOQ	LOD	Limit	Status	
	µg/g	µg/g	µg/g	µg/g	
Arsenic	ND	0.009	0.003	1.5	Pass
Cadmium	ND	0.002	0.001	0.5	Pass
Lead	<LOQ	0.004	0.001	0.5	Pass
Mercury	ND	0.014	0.005	3	Pass

NR = Not Reported (no analysis was performed), ND = Not Detected (the concentration is less than the Limit of Detection (LOD)). Analytical instrumentation used: ICP-MS; samples analyzed according to SOP CO-HM-INST-003.

Microbiological Screening

	Limit	Result	Status
	CFU/g	CFU/g	
Salmonella SPP		Not Detected	Pass
STEC		Not Detected	Pass
Total Coliforms	100	NR	NT
Total Aerobic Plate Count	10000	NR	NT
Total Yeast and Mold	1000	NR	NT

ND=Not Detected. Analytical instrumentation used:qPCR and microbial plating; samples analyzed according to SOPs CO-MICRO-PREP-001 and CO-MICRO-PLATE-001.



Infinite Chemical Analysis Labs
8312 Miramar Mall
San Diego, CA
(858) 623-2740
www.infiniteCAL.com
Lic# C8-000047-LIC

Josh M Swider

Josh Swider
Lab Director, Managing Partner
10/27/2023

Confident Cannabis
All Rights Reserved
support@confidentcannabis.com
(866) 506-5866
www.confidentcannabis.com



This product has been tested by Infinite Chemical Analysis Labs, LLC using validated testing methods and a quality control system as required by state law. Sample processing and testing was performed in accordance with CDPHE Colorado Wholesale Food, Industrial Hemp, and Shellfish Regulations (6 CCR 1010-21). Values reported relate only to the product tested. Infinite Chemical Analysis Labs, LLC makes no claims pertaining to the efficacy, safety, or other risks associated with any detected or non-detected levels of any compounds reported herein. This Certificate shall not be reproduced except in full without the written approval of Infinite Chemical Analysis Labs, LLC.



Certificate of Analysis

CDPHE QA SAMPLE

3 of 4

ICAL ID: 20231018-005
Sample: CA231018-004-005
Hurricane
Strain: Hurricane
Category: Ingestible
Type: Beverage

Sip Elixirs
Lic. #
N/A
San Diego, CA 92121
Lic. #

Batch#: Hur-101623
Batch Size Collected:
Total Batch Size:
Collected: 10/27/2023; Received: 10/27/2023
Completed: 10/27/2023

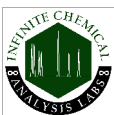
Chemical Residue Screening

Category 1	LOQ	LOD	Status	Mycotoxins	LOQ	LOD	Limit	Status		
	µg/g	µg/g	µg/g		µg/kg	µg/kg	µg/kg			
Aldicarb	ND	0.030	0.010	Pass	B1	ND	7.88	2.6	Tested	
Carbofuran	ND	0.010	0.005	Pass	B2	ND	6.18	2.04	Tested	
Chlorfenapyr	ND	0.024	0.008	Pass	G1	ND	8.99	2.97	Tested	
Chlorpyrifos	ND	0.075	0.010	Pass	G2	ND	5.72	1.89	Tested	
Coumaphos	ND	0.010	0.005	Pass	Ochratoxin A	ND	11.72	3.87	20	Pass
Daminozide	ND	0.075	0.050	Pass	Total Aflatoxins	ND		20	Pass	
Dichlorvos	ND	0.050	0.020	Pass						
Dimethoate	ND	0.010	0.005	Pass						
Ethoprophos	ND	0.010	0.005	Pass						
Etofenprox	ND	0.030	0.010	Pass						
Fenoxycarb	ND	0.010	0.005	Pass						
Fipronil	ND	0.010	0.005	Pass						
Imazalil	ND	0.010	0.005	Pass						
Methiocarb	ND	0.010	0.005	Pass						
Mevinphos	ND	0.025	0.010	Pass						
MGK-264	ND	0.016	0.005	Pass						
Paclbutrazol	ND	0.010	0.005	Pass						
Parathion Methyl	ND	0.026	0.009	Pass						
Propoxur	ND	0.010	0.005	Pass						
Spiroxamine	ND	0.030	0.020	Pass						
Thiacloprid	ND	0.010	0.005	Pass						

Category 2	LOQ	LOD	Limit	Status	Category 2	LOQ	LOD	Limit	Status		
	µg/g	µg/g	µg/g	µg/g		µg/g	µg/g	µg/g	µg/g		
Abamectin	ND	0.100	0.050	0.25	Pass	Kresoxim Methyl	ND	0.030	0.010	0.15	Pass
Acephate	ND	0.030	0.010	0.05	Pass	Malathion	ND	0.010	0.005	0.01	Pass
Acequinocyl	ND	0.075	0.020	0.075	Pass	Metalaxyl	ND	0.010	0.005	0.01	Pass
Acetamiprid	ND	0.030	0.010	0.05	Pass	Methomyl	ND	0.025	0.010	0.025	Pass
Azoxystrobin	ND	0.010	0.005	0.01	Pass	Myclobutanil	ND	0.010	0.005	0.01	Pass
Bifenazate	ND	0.010	0.005	0.01	Pass	Naled	ND	0.030	0.020	0.03	Pass
Bifenthrin	ND	0.030	0.005	0.03	Pass	Oxamyl	ND	0.030	0.020	1.5	Pass
Boscalid	ND	0.010	0.005	0.01	Pass	Pentachloronitrobenzene	ND	0.016	0.005	0.016	Pass
Carbaryl	ND	0.025	0.010	0.025	Pass	Permethrin	ND	0.030	0.020	0.03	Pass
Chlorantraniliprole	ND	0.030	0.010	0.03	Pass	Phosmet	ND	0.030	0.020	0.03	Pass
Clofentezine	ND	0.010	0.005	0.01	Pass	Piperonyl Butoxide	ND	0.030	0.010	1.25	Pass
Cyfluthrin	ND	0.038	0.013	0.0384	Pass	Prallethrin	ND	0.075	0.030	0.075	Pass
Cypermethrin	ND	0.053	0.018	0.0525	Pass	Propiconazole	ND	0.030	0.010	0.03	Pass
Diazinon	ND	0.030	0.010	0.03	Pass	Pyrethrins	ND	0.045	0.010	0.045	Pass
Dimethomorph	ND	0.030	0.010	0.03	Pass	Pyridaben	ND	0.020	0.010	0.02	Pass
Etoxazole	ND	0.030	0.010	0.03	Pass	Spinetoram	ND	0.010	0.005	0.01	Pass
Fenhexamid	ND	0.045	0.020	0.045	Pass	Spinosad	ND	0.010	0.005	0.01	Pass
Fenpyroximate	ND	0.030	0.010	0.03	Pass	Spiromesifen	ND	0.030	0.010	0.03	Pass
Flonicamid	ND	0.025	0.010	0.025	Pass	Spirotetramat	ND	0.010	0.005	0.01	Pass
Fludioxonil	ND	0.010	0.005	0.01	Pass	Tebuconazole	ND	0.010	0.005	0.01	Pass
Hexythiazox	ND	0.030	0.010	0.03	Pass	Thiamethoxam	ND	0.010	0.005	0.01	Pass
Imidacloprid	ND	0.010	0.005	0.01	Pass	Trifloxystrobin	ND	0.010	0.005	0.01	Pass

Other Analyte(s):

NR = Not Reported (no analysis was performed), ND = Not Detected (the concentration is less than the Limit of Detection (LOD)). Analytical instrumentation used: LC-MS-MS & GC-MS-MS; samples analyzed according to SOPs CO-PESTMYCO-LC-INST-004 and CO-PEST-GC-INST-004 and CO-PEST-GC-INST-003.



Infinite Chemical Analysis Labs
8312 Miramar Mall
San Diego, CA
(858) 623-2740
www.infiniteCAL.com
Lic# C8-0000047-LIC

Josh M Swider

Josh Swider
Lab Director, Managing Partner
10/27/2023

Confident Cannabis
All Rights Reserved
support@confidentcannabis.com
(866) 506-5866
www.confidentcannabis.com



This product has been tested by Infinite Chemical Analysis Labs, LLC using validated testing methods and a quality control system as required by state law. Sample processing and testing was performed in accordance with CDPHE Colorado Wholesale Food, Industrial Hemp, and Shellfish Regulations (6 CCR 1010-21). Values reported relate only to the product tested. Infinite Chemical Analysis Labs, LLC makes no claims pertaining to the efficacy, safety, or other risks associated with any detected or non-detected levels of any compounds reported herein. This Certificate shall not be reproduced except in full without the written approval of Infinite Chemical Analysis Labs, LLC.



Certificate of Analysis

CDPHE QA SAMPLE

4 of 4

ICAL ID: 20231018-005
Sample: CA231018-004-005
Hurricane
Strain: Hurricane
Category: Ingestible
Type: Beverage

Sip Elixirs
Lic. #
N/A
San Diego, CA 92121
Lic. #

Batch#: Hur-101623
Batch Size Collected:
Total Batch Size:
Collected: 10/27/2023; Received: 10/27/2023
Completed: 10/27/2023

Chemical Residue Screening

Analytes	LOQ	LOD	Limit	Status	Analytes	LOQ	LOD	Limit	Status		
	µg/g	µg/g	µg/g			µg/g	µg/g	µg/g			
Abamectin	ND	0.100	0.050	0.250	Pass	Fludioxonil	ND	0.010	0.005	0.010	Pass
Acephate	ND	0.030	0.010	0.050	Pass	Fluopyram	ND	0.005	0.005	0.010	Pass
Acequinocyl	ND	0.075	0.020	0.075	Pass	Hexythiazox	ND	0.030	0.010	0.030	Pass
Acetamiprid	ND	0.030	0.010	0.050	Pass	Imazalil	ND	0.010	0.005	0.010	Pass
Aldicarb	ND	0.030	0.010	0.500	Pass	Imidacloprid	ND	0.010	0.005	0.010	Pass
Allethrin	ND	0.030	0.015	0.100	Pass	Iprodione	ND	0.475	0.158	0.500	Pass
Atrazine	ND	0.005	0.005	0.005	Pass	Kinoprene	ND	0.221	0.074	1.250	Pass
Azadirachtin	ND	0.050	0.030	0.500	Pass	Kresoxim Methyl	ND	0.030	0.010	0.150	Pass
Azoxystrobin	ND	0.010	0.005	0.010	Pass	Lambda-Cyhalothrin	ND	0.050	0.030	0.050	Pass
Benzovindiflupyr	ND	0.005	0.005	0.010	Pass	Malathion	ND	0.010	0.005	0.010	Pass
Bifenazate	ND	0.010	0.005	0.010	Pass	Metalaxyl	ND	0.010	0.005	0.010	Pass
Bifenthrin	ND	0.030	0.005	0.030	Pass	Methiocarb	ND	0.010	0.005	0.010	Pass
Boscalid	ND	0.010	0.005	0.010	Pass	Methomyl	ND	0.025	0.010	0.025	Pass
Buprofezin	ND	0.030	0.015	0.030	Pass	Methoprene	ND	0.050	0.025	0.050	Pass
Captan	ND	0.358	0.120	5.000	Pass	Mevinphos	ND	0.025	0.010	0.025	Pass
Carbaryl	ND	0.025	0.010	0.025	Pass	MGK-264	ND	0.016	0.005	0.050	Pass
Carbofuran	ND	0.010	0.005	0.010	Pass	Myclobutanil	ND	0.010	0.005	0.010	Pass
Chlorantranilprole	ND	0.030	0.010	0.030	Pass	Naled	ND	0.030	0.020	0.030	Pass
Chlordane	ND	0.075	0.025	0.025	Pass	Novaluron	ND	0.020	0.010	0.025	Pass
Chlorfenapyr	ND	0.024	0.008	1.500	Pass	Oxamyl	ND	0.030	0.020	1.500	Pass
Chlorpyrifos	ND	0.075	0.010	0.500	Pass	Paclitaxel	ND	0.010	0.005	0.010	Pass
Clofentezine	ND	0.010	0.005	0.010	Pass	Parathion Methyl	ND	0.026	0.009	0.026	Pass
Clothianidin	ND	0.010	0.005	0.025	Pass	Pentachloronitrobenzene	ND	0.016	0.005	0.016	Pass
Coumaphos	ND	0.010	0.005	0.010	Pass	Permethrin	ND	0.030	0.020	0.030	Pass
Cyantranilprole	ND	0.010	0.005	0.010	Pass	Phenothrin	ND	0.030	0.015	0.030	Pass
Cyfluthrin	ND	0.038	0.013	0.038	Pass	Phosmet	ND	0.030	0.020	0.030	Pass
Cypermethrin	ND	0.053	0.018	0.053	Pass	Piperonyl Butoxide	ND	0.030	0.010	1.250	Pass
Cyprodinil	ND	0.010	0.005	0.010	Pass	Pirimicarb	ND	0.010	0.005	0.010	Pass
Daminozide	ND	0.075	0.050	0.075	Pass	Prallethrin	ND	0.075	0.030	0.075	Pass
Deltamethrin	ND	0.050	0.025	0.050	Pass	Propiconazole	ND	0.030	0.010	0.030	Pass
Diazinon	ND	0.030	0.010	0.030	Pass	Propoxur	ND	0.010	0.005	0.010	Pass
Dichlorvos	ND	0.050	0.020	0.050	Pass	Pyraclostrobin	ND	0.010	0.005	0.010	Pass
Dimethoate	ND	0.010	0.005	0.010	Pass	Pyrethrins	ND	0.045	0.010	0.045	Pass
Dimethomorph	ND	0.030	0.010	0.030	Pass	Pyridaben	ND	0.020	0.010	0.020	Pass
Dinotefuran	ND	0.050	0.025	0.050	Pass	Pyriproxifen	ND	0.010	0.005	0.010	Pass
Diuron	ND	0.010	0.005	0.010	Pass	Resmethrin	ND	0.050	0.025	0.050	Pass
Dodemorph	ND	0.020	0.010	0.020	Pass	Spinetoram	ND	0.010	0.005	0.010	Pass
Endosulfan I	ND	0.353	0.118	2.500	Pass	Spinosad	ND	0.010	0.005	0.010	Pass
Endosulfan II	ND	0.239	0.080	2.500	Pass	Spirodiclofen	ND	0.050	0.025	0.050	Pass
Endosulfan Sulfate	ND	0.026	0.009	2.500	Pass	Spiromesifen	ND	0.030	0.010	0.030	Pass
Ethoprophos	ND	0.010	0.005	0.010	Pass	Spirotetramat	ND	0.010	0.005	0.010	Pass
Etofenprox	ND	0.030	0.010	0.030	Pass	Spiroxamine	ND	0.030	0.020	0.030	Pass
Etoxazole	ND	0.030	0.010	0.030	Pass	Tebuconazole	ND	0.010	0.005	0.010	Pass
Etridiazole	ND	0.044	0.015	0.150	Pass	Tebufenazide	ND	0.010	0.005	0.010	Pass
Fenhexamid	ND	0.045	0.020	0.045	Pass	Teflubenzuron	ND	0.020	0.010	0.025	Pass
Fenoxycarb	ND	0.010	0.005	0.010	Pass	Tetrachlorvinphos	ND	0.010	0.005	0.010	Pass
Fenpyroximate	ND	0.030	0.010	0.030	Pass	Tetramethrin	ND	0.050	0.025	0.050	Pass
Fensulfothion	ND	0.010	0.005	0.010	Pass	Thiabendazole	ND	0.010	0.005	0.010	Pass
Fenthion	ND	0.007	0.002	0.010	Pass	Thiacloprid	ND	0.010	0.005	0.010	Pass
Fenvalerate	ND	0.402	0.134	0.402	Pass	Thiamethoxam	ND	0.010	0.005	0.010	Pass
Fipronil	ND	0.010	0.005	0.010	Pass	Thiophanate-Methyl	ND	0.020	0.010	0.020	Pass
Flonicamid	ND	0.025	0.010	0.025	Pass	Trifloxystrobin	ND	0.010	0.005	0.010	Pass

Mycotoxins	LOQ	LOD	Limit	Status	Mycotoxins	LOQ	LOD	Limit	Status	
	µg/kg	µg/kg	µg/kg			µg/kg	µg/kg	µg/kg		
B1	ND	7.88	2.6	Tested	G2	ND	5.72	1.89	Tested	
B2	ND	6.18	2.04	Tested	Ochratoxin A	ND	11.72	3.87	20	Pass
G1	ND	8.99	2.97	Tested	Total Aflatoxins	ND			20	Pass

Other Analyte(s):

NR = Not Reported (no analysis was performed), ND = Not Detected (the concentration is less than the Limit of Detection (LOD)). Analytical instrumentation used: LC-MS-MS & GC-MS-MS; samples analyzed according to SOPs CO-PESTMYCO-LC-INST-004 and CO-PEST-GC-INST-004 and CO-PEST-GC-INST-003.



Infinite Chemical Analysis Labs
8312 Miramar Mall
San Diego, CA
(858) 623-2740
www.infiniteCAL.com
Lic# C8-000047-LIC

Josh M Swider

Josh Swider
Lab Director, Managing Partner
10/27/2023

Confident Cannabis
All Rights Reserved
support@confidentcannabis.com
(866) 506-5866
www.confidentcannabis.com



This product has been tested by Infinite Chemical Analysis Labs, LLC using validated testing methods and a quality control system as required by state law. Sample processing and testing was performed in accordance with CDPHE Colorado Wholesale Food, Industrial Hemp, and Shellfish Regulations (6 CCR 1010-21). Values reported relate only to the product tested. Infinite Chemical Analysis Labs, LLC makes no claims pertaining to the efficacy, safety, or other risks associated with any detected or non-detected levels of any compounds reported herein. This Certificate shall not be reproduced except in full without the written approval of Infinite Chemical Analysis Labs, LLC.

Certificate of Analysis Appendix

Residual Solvents - Utah Industrial Hemp

Analyte	Result (ug/g)	LOD (ug/g)	LOQ (ug/g)	Action Limit(ug/g)	Status
1,2 Dimethoxyethane	ND	5.9917	17.975	100	Pass
1,4 Dioxane	ND	12.8684	38.6052	380	Pass
1-Butanol	11.43	3.1446	9.4337	5,000	Pass
1-Pentanol	ND	9.9794	29.9383	5,000	Pass
1-Propanol	ND	6.9987	20.9962	5,000	Pass
2-Butanol	ND	9.5709	28.7127	5,000	Pass
2-Butanone	ND	7.2129	21.6386	5,000	Pass
2-Ethoxyethanol	ND	3.8723	11.6169	160	Pass
2-methylbutane	ND	0.679	2.037	5,000	Pass
2-methylpentane	ND	9.0715	27.2145	290	Pass
3-methylpentane	ND	7.3795	22.1384	290	Pass
2-Propanol (IPA)	ND	11.5286	34.5857	5,000	Pass
Acetone	ND	8.2267	24.6802	5,000	Pass
Acetonitrile	ND	8.3746	25.1238	410	Pass
Benzene	ND	0.3588	1.0763	2	Pass
Butane	ND	9.552	28.6559	5,000	Pass
Cumene	ND	8.32	24.96	70	Pass
Cyclohexane	ND	8.4235	25.2705	3,880	Pass
Dichloromethane	ND	3.9511	11.8533	600	Pass
2,2-dimethylbutane	ND	0.8804	2.6412	290	Pass
2,3-dimethylbutane	ND	0.9493	2.8479	290	Pass
Dimethyl sulfoxide	ND	8.3992	25.1976	5,000	Pass
Ethanol	151.6002	4.8156	14.4469	5,000	Pass
Ethyl acetate	ND	14.2542	42.7625	5,000	Pass
Ethyl ether	ND	6.8124	20.4372	5,000	Pass
Ethylene glycol	ND	3.4447	10.334	620	Pass
Ethylene Oxide	ND	6.5244	19.5733	50	Pass
Heptane	ND	0.4144	1.2431	5,000	Pass
Hexane	ND	0.5026	1.5078	290	Pass
Isobutane	ND	10.2495	30.7486	5,000	Pass
Isopropyl acetate	ND	4.1274	12.3823	5,000	Pass
Methanol	ND	18.42	55.26	3,000	Pass
N,N-dimethylacetamide	ND	268.955	806.8649	1,090	Pass
N,N-dimethylformamide	ND	2.7382	8.2147	880	Pass
Pentane	ND	0.8382	2.5146	5,000	Pass
Propane	ND	7.9467	23.8402	5,000	Pass
Pyridine	ND	19.55	58.64	100	Pass
Sulfolane	ND	22.886	68.6581	160	Pass
Tetrahydrofuran	ND	6.2156	18.6469	720	Pass
Toluene	ND	0.4061	1.2184	890	Pass
Total Xylenes	ND	10.3738	31.1216	2,170	Pass

Josh M Swider

Josh Swider
Lab Director, CEO

Hurricane
10/25/2023

Certificate of Analysis



Sample Name	Hurricane	ICAL ID	20231018-005
Batch	Hur-101623	Registering Laboratory	San Diego
Client	Sip Elixirs	Contact	Customer Service Team
Address		Address	8312 Miramar Mall San Diego, CA 92121
Telephone		Telephone	(858) 623-2740
Email		Email	questions@infinitecal.com
Sampler		COA Issue Date	October 25, 2023

This report supersedes any previous revision with this reference. This document must not be reproduced, except in full. If samples were provided by the customer, results apply only to the samples 'as received' and responsibility for representative sampling rests with the customer. Water results are reported on an 'as is' basis. Infinite Chemical Analysis Labs, LLC makes no claims pertaining to the efficacy, safety, or other risks associated with any detected or non-detected levels of any compounds reported herein.

Definitions

| <: Less Than | >: Greater Than | RP: Result Pending | MPN: Most Probable Number | CFU: Colony Forming Units | ---: Not Requested | NA: Not Applicable | ND: Not Detected | MDL: Method Detection Limit | LCMRL: Lowest Concentration Minimum Reporting Level | NT: Not Tested | ~: Estimated | TBA: To Be Advised | TNTC: Too numerous to count |

Microbial Plate Panel

Analyte	CFU/g	MDL	Client Limit ¹	Status ²
Aerobic (APC)	10	10	---	---
Coliforms	<MDL	10	---	---
<i>E. coli</i>	NT	10	---	---
Yeast & Mold	<MDL	10	---	---
<i>Enterobacteriaceae</i>	NT	10	---	---
<i>Salmonella spp.</i>	NT	10	---	---
<i>Listeria spp.</i>	NT	10	---	---

Analysis Location

All analyses were completed by Infinite Chemical Analysis – San Diego.

Analysis Comments

Method ID: MICRO-PLATE-001

¹Client limit is self-selected and will be replaced by official CA state limits when they become available.

²Status of Pass/Fail based on client limit selected.

Josh M Swider

Josh Swider
Lab Director, CEO
October 25, 2023